

# DeputyDome

## **Bullet-Resistant** Dome Camera System



Videolarm's patented DeputyDome adds an unparalleled level of protection to your video security system.

Exceeding UL Standard 752 - Level 1 protection, the DeputyDome is constructed of heavy-gauge stainless steel and incorporates a unique "turret" system, which enables the dome to absorb the shocks from attacking bullets (up to 9mm) being fired at the unit. This absorption protects the inner camera from most hostile vibrations resulting from a lapse in monitoring. Ideal for high volatile crime areas, the DeputyDome comes preassembled with either an IP or Analog day/night camera with 26x zoom. Also available is a pressurized model which protects the inner camera system from minute foreign substances.

- Meets / exceeds Level 1 protection per UL Standard 752
- Heavy-duty stainless steel housing construction and mounting bracket
- Unique rotating "turret" transfers ballistic impact to outer steel housing
- Lexguard™ shield which protects camera from bullet attacks up to 9mm
- Heater / blower feature
- Tamper-resistant fasteners
- Quick disconnect feature, which provides simple & fast installations & easy servicing
- Available IP or Analog PTZ models (Day/Night Camera with integral 26x zoom)
- Pressurized models available: eliminating moisture, dust, insects and exhaust fumes

**US Patent #6,354,749 B1**

# DeputyDome

The patented bullet-resistant DeputyDome is available in either a standard or pressurized model. The day/night color camera features an integral zoom lens. An integral pan/tilt with 360° continuous rotation is also included. Each DeputyDome comes with a quick-connect wall mount.

## IP Ready and Analog models; also available Pressurized:

### IP Ready (Network) Model:

**DDW10CN2:** DeputyDome™, Bullet-Resistant IP Camera System, PTZ and 26x Day/Night Camera System. Heavy-Duty Metal Gear Pan/Tilt. MPEG-4 & MJPEG video compression. Full DI. Clear dome, w/24Vac input, heater/blower.

### Analog Model: DDW10CR2:

DeputyDome™, 10-gauge Steel Bullet-Resistant Outdoor dome PTZ Camera System w/26x Day/Night Camera, on-board receiver/driver, 24Vac heater.

### Analog Model w/120vac input:

**DDW10CR:** Analog model DDW10CR2, 120Vac heater

### Pressurized Model: PDDW10CN2:

Pressurized version of network model DDW10CN2. Pressurization eliminates dust, insects, and pollution; dry nitrogen eliminates fogging and condensation build-up.

### Pressurized Analog Model:

**PDDW10CR2:** Pressurized version of analog model DDW10CR2. Pressurization eliminates dust, insects, and pollution; dry nitrogen eliminates fogging.

### Pressurized Analog Model w/120vac input: PDDW10CR:

Pressurized DDW10CR2, 120Vac heater

## DeputyDome Under Fire:

To view actual footage of a DeputyDome system being attacked, please visit [www.videolarm.com](http://www.videolarm.com) and select **Press Room: Multimedia**.



## Optional Components and Accessories:



**SRM1500**  
Corner mount  
bracket,  
150 lbs. max



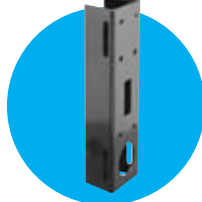
**PS24**  
Rugged cast  
aluminum  
power box  
w/84vA and  
24vA power  
supply



**CA2**  
Corner mount  
bracket  
150 lbs. max



**SRCW2000**  
Rotating roof-top  
bracket, 150 lbs.  
max.



**PM3**  
Pole mount  
bracket  
for existing  
3' - 10' poles  
150 lbs. max.



**VLC485**  
RS485 controller  
(2) RS232 ports  
(1) RS485port  
joystick control.  
Desk top model  
24vac input power

## Mechanical Specifications

|                             |   |
|-----------------------------|---|
| Size:<br>(Product/shipping) | 16.5 x 14.5 x 12.75"<br>420 x 368 x 324mm (h*w*d) |
| Weight:                     | 65 lbs/ 30kg                                      |
| Construction Top:           | Stainless steel                                   |
| Dome:                       | Cell-cast acrylic                                 |
| Rotating Liner:             | Heat treated aluminum                             |
| Wall Mount Bracket:         | 10-gauge powder-coated stainless steel            |

## Pressurized Models:

|                        |                            |
|------------------------|----------------------------|
| Pressure relief valve: | 7 psi                      |
| Schraeder valve:       | Nitrogen input             |
| Power connector:       | 18 pin hermetically sealed |

## Camera Specifications

|                            |   |
|----------------------------|---|
| Image sensor:              | 1/4 type EXView HAD™ CCD                                |
| Signal Format:             | NTSC, PAL   |
| Number of effective pixels | Approx. 380,000 pixels                                  |
| Horizontal Resolution:     | 470 TVL - NTSC • 460 TVL - PAL                          |
| Lens                       | 26x Zoom<br>f=3.5mm (wide) to 91.0mm (tele)             |
| Digital zoom               | 12X (216X with optical zoom)                            |
| Angle of view              | 55° (wide end) to 2.3° (tele end)                       |
| Sync. System               | Internal/External (V lock)                              |
| Minimum Illumination       | 1.0 lux (typical, color)<br>(F1.4 normal shutter speed) |
| w/cut filter removed-      | Near infrared, .02 lux IR                               |
| S/N ratio                  | 50 dB   |
| White Balance/Gain/Iris    | Auto with manual override                               |
| Back-light compensation    | On/Off  |

## Environmental Specifications

|                    |                               |
|--------------------|-------------------------------|
| Temperature Range: | -20°F (-29°C) to 120°F (49°C) |
|--------------------|-------------------------------|

## Electrical Specifications

|                       |                              |
|-----------------------|------------------------------|
| Power Source: 120Vac: | 115 VAC, 65VA                |
| 24Vac:                | 24 VAC (Class 2), 65VA       |
| Video Outputs:        | 1 Vpp/75 ohm composite video |

## Network Specifications

|                             |   |
|-----------------------------|---|
| Network Interface:          | 10/100 Base-T Ethernet  |
| Protocols:                  | TCP(UDP)/IP, ICMP, HTTP, TFTP,<br>FTP, Telnet, SMTP, DHCP, NTP,<br>DNS, DDNS, RTSP, RTP/TCP(UDP)  |
| Video:                      | MPEG-4; JPEG; MJPEG   |
| Video Adjustment:           | Brightness, Contrast, Hue,<br>Saturation, Frame rate, Bit rate<br>(Constant Bit Rate (CBR), Variable<br>Bit Rate (VBR) w/quality level(s),<br>Group of Pictures (GOP) size, Frame<br>Sequence (I-Frame, I-Frame/P-<br>Frame), Interlaced/ Progressive<br>Scanning |
| Resolutions Full D1 (4SIF): | NTSC=720x480; PAL=720x576   |
| SIF:                        | NTSC=352x240; PAL=352x288   |
| QSIF:                       | NTSC=176x 112; PAL=176x144  |

For full product specs, go to [www.videolarm.com](http://www.videolarm.com) and use the search engine to navigate to a specific product page.

**Videolarm** 2525 Park Central Blvd. Decatur, GA 30035  
1-800-554-1124 • [www.videolarm.com](http://www.videolarm.com)

US Patent #6,354,749 B1

