



### Industry Leading Performance

Utilizing the most advanced compression methods to record up to 120 images per second, the RoadRunner™ system delivers exceptional video quality, industry-leading recording durations and higher recording rates.

### Interactive Speed & Mapping Interface (iSM™)

The GPS option provides a map display of historical routes and a graph of vehicle speed data. By selecting a location on the map or a desired speed, video from that location or speed is instantly provided. This search option provides an easy method for identifying students while confirming pick-up and drop-off locations and investigating speed complaints.

### Highest Reliability, Lowest Cost of Ownership

Performing with minimal maintenance for years longer than other systems, the RoadRunner™ system is easier to maintain and more affordable. The system can be easily upgraded and expanded to offer maximum value for growing applications. Reducing maintenance and administrative costs, the system includes license-free software with maintenance-free operations such as fleet-wide time synchronization, remote updates and scheduled system health checks.

### Rugged Steel Construction

The steel constructed digital video recorder is Mil-Spec and SAE rated for proven durability and reliability in harsh mobile environments. Including a 3-year warranty, the RoadRunner™ system provides superior quality in an easy to use, turn-key system providing years of reliable service.

### Longest Recording Duration, Easy off-loading of Video

The RoadRunner™ system records months of high quality video with storage up to 1.5TB and provides quick and easy search functions with several easy options for saving and archiving secure video clips.

## Rugged • Reliable • RoadRunner™ On-Board Digital Surveillance Systems



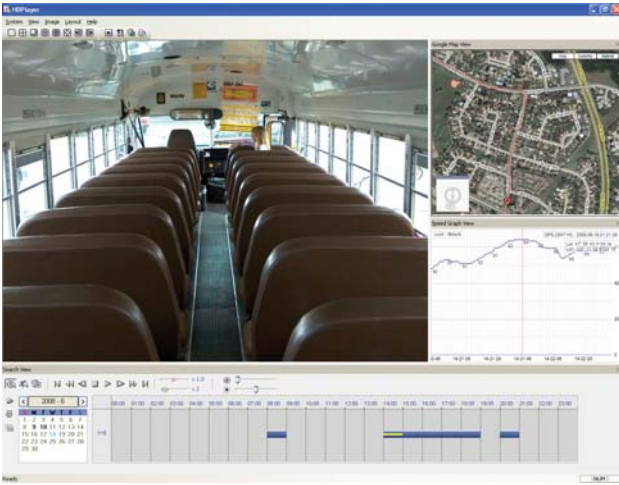
The RoadRunner™ digital video recorder delivers the highest quality video and audio recording and is backed by an industry-leading 3-year warranty. Designed and manufactured specifically for use in mobile applications, the system provides years of high quality video recording at the lowest cost of ownership. Included user-friendly and license-free software is intuitive, easy to use and designed to provide the video that you need, when you need it.

The optional GPS provides easy searching based on location or speed with mapping location information and speed charts that provide graphical route and historical speed information. Simply select a point on the map or a selected speed for instant video access from that location / speed. The iSM™ (Interactive Speed and Mapping) interface provides the ability to easily investigate speed complaints and provides street names and geographical data for intuitive route and bus stop information.



# Rugged • Reliable • RoadRunner™

## On-Board Digital Surveillance Systems



### RASplus™ and HDPlayer™ Software

Provides remote viewing of multiple vehicles and sites simultaneously from virtually any location | Perform fleet-wide updates, programming, time synchronization | Receive automatic health report status and email notification for events, system failures, hard drive status, camera obstructions, etc. | Call-back feature provides live images to a central location in the event of an emergency | Simultaneously transmit live and playback video from hundreds of video sources to multiple users | Easy search tools provide instant access to recorded data for searching by event or time and date; Add the optional GPS for searching by location or speed, the iSM™ (Interactive Speed and Mapping) Interface features historical location and speed data providing intuitive vehicle tracking information | Create secure tamper-proof video clips with optional password protection to restrict viewing access | System settings are secure with password protected access-rights for up to 256 users | License-free and included at no additional charge

## MR4 Series

Records up to 4 Cameras + Audio



## MR2 Series

Records up to 2 Cameras + Audio



### Camera Options and Accessories:



- RR-C2/ RR-CIR2**
- Color Interior Camera
  - Built-in Microphone
  - IR Illumination (optional)
  - High Resolution (540 TV lines)
  - 2.5, 3.6, 6.0, 8.0 or 12mm lens



- RR-CD/ RR-CT**
- Color Interior/Exterior Camera
  - Vandal-Resistant
  - 4-9mm Varifocal Lens
  - Standard or High Resolution
  - Dome or Teardrop Housing



- RR-CVIR**
- Color Interior/Exterior Camera
  - Vandal Resistant
  - IR Illumination

- RR-HDP Hard Disk Player / Adapter
- RR-MB1 Mounting Bracket for DVR, Under-seat Mount
- RR-MB2 Mounting Bracket for DVR, Vertical Mount
- RR-GPS GPS Antenna w/ iSM™ Interface
- RR-WT200 Wireless LAN High Powered Transmitter
- RR-WR200 Wireless LAN High Powered Receiver
- RR-WC300 Wireless High-Performance Cellular Router and Antenna\*
- RR-ENV, RR-ENVH Environmental Protective Enclosure, with Heater
- RR-MR\_\_HD Extra Removable HDD (specify size 160 to 1,500GB)

For additional system options and specifications visit our website: [www.avt-usa.com](http://www.avt-usa.com)

Features and specifications are subject to change without notice

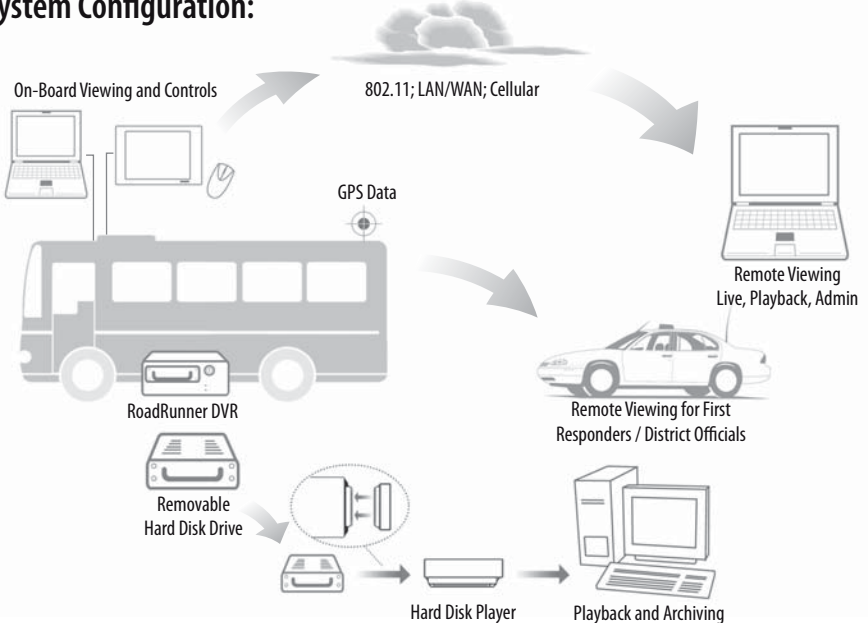
\* Air card and monthly service is not included and must be arranged through a local provider

### Recording Duration Chart:

Hard Disk Drive:	1.5TB HDD	1.0TB HDD	750GB HDD	500GB HDD	250GB HDD	160GB HDD
Recording 30 ips	4,517 hours	3,010 hours	2,257 hours	1,503 hours	750 hours	474 hours
Recording 120 ips	1,129 hours	752 hours	564 hours	375 hours	187 hours	118 hours

NOTE: ips = images per second. 160GB is standard and included. Recording durations are based on standard quality. For complete recording duration estimates, please utilize the HDD Calculator tool located on our website: [www.avt-usa.com](http://www.avt-usa.com)

### System Configuration:



14148 NE 190th Street  
Woodinville, WA 98072

[www.avt-usa.com](http://www.avt-usa.com)

Tel: 888-AVT-USA-1 / 425-483-7100  
Fax: 425-483-7200

Video Clips, Manuals, Brochures...