



## Industry Leading Performance

Utilizing the most advanced compression methods to record each camera at real time, the RoadRunner system delivers industry-leading recording rates, longer recording durations and exceptional video quality.

## Secure Video Clips

Video clips feature optional password protection, watermarking and 128-bit encryption to ensure video is authentic and secure. System settings are secured with password protected access-rights for up to 64 groups and 256 users.

## Simultaneous Recording

The system is configured to automatically begin recording, eliminating user error and continues to record even during playback, archiving and performing administration functions.

## Simple, Turn-key Installation

The system includes all the wiring and cables required, providing the option for easy do-it-yourself installation.

## Lowest Cost of Ownership

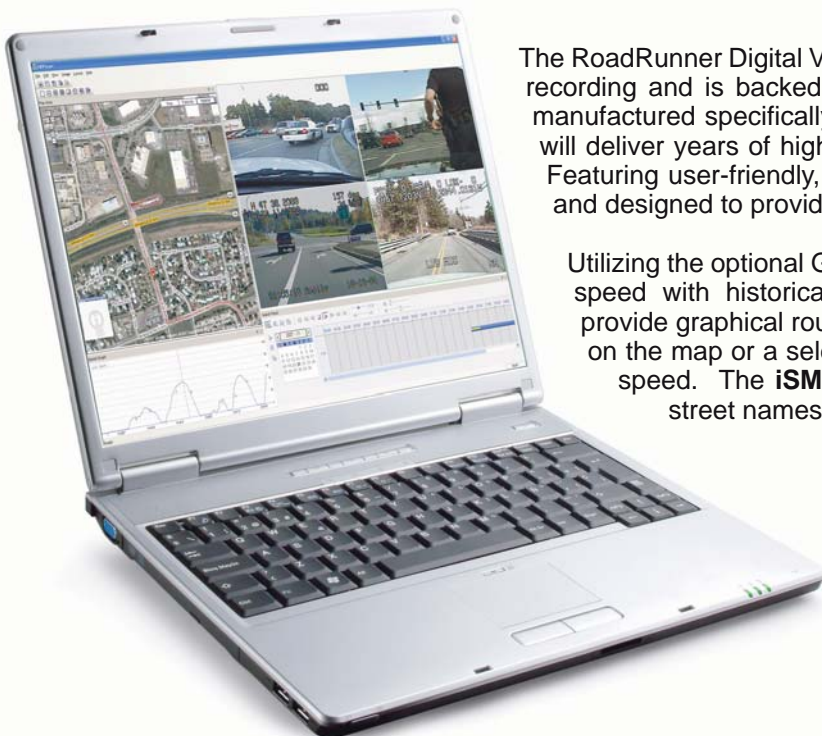
The RoadRunner system can be easily upgraded and expanded. Offers a 3-year warranty, a lifetime of software updates, months of data storage and years of maintenance-free operation.

## Included Software for Easy System Management

License free and included software allows for easy fleet-wide system updates. The optional GPS includes the **iSM™ (Interactive Speed and Mapping) Interface** featuring historical mapping and speed graphs. By selecting a location on the map or a desired speed, video from that location or speed is instantly provided. With automatic health-system checks and email notification for events, hard drive status and failures, the RoadRunner system provides easy system management.

# Rugged • Reliable • RoadRunner™

Digital Surveillance Systems for Public Safety Applications



The RoadRunner Digital Video Recorder delivers the highest quality video and audio recording and is backed by an industry-leading 3-year warranty. Designed and manufactured specifically for use in mobile applications, the RoadRunner system will deliver years of high quality video recording at the lowest cost of ownership. Featuring user-friendly, license-free software the system is intuitive, easy to use and designed to provide the video that you need, when you need it.

Utilizing the optional GPS feature, you can search for video based on location or speed with historical mapping location information and speed charts that provide graphical route and historical speed information. Simply select a point on the map or a selected speed for instant video access from that location or speed. The **iSM™ (Interactive Speed and Mapping)** interface provides street names and geographical data for route and stop information.

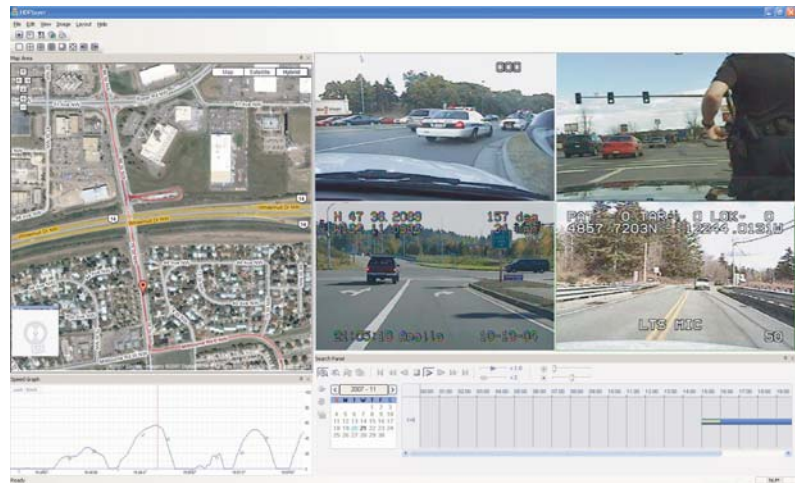




# Rugged • Reliable • RoadRunner™

## Digital Surveillance Systems for Public Safety Applications

License-Free, included at no additional charge • Remote viewing from virtually any location • View multiple vehicles and sites simultaneously, up to 64 cameras from up to 16 different sites • Fleet-wide updates, programming and time synchronization • Automatic health report status and emailed notification for events, system failures, hard drive status and camera obstructions • Call-back feature provides live images to a central location in the event of an emergency • Simultaneously transmit live and playback video from hundreds of video sources to multiple users • Easy search tools provide instant access to recorded data; search by event or time and date • Utilize the GPS option for searching by location or speed; The new iSM™ (Interactive Speed and Mapping) Interface features historical location and speed data providing intuitive vehicle tracking information • Create secure tamper-proof video clips with optional password protection to restrict viewing access • System settings are secure with password protected access-rights for up to 256 users



### RASplus™ and HDPlayer™ Software

#### Camera Options and Accessories:



- RR-CIR1**
- Color Interior Camera
  - Built-in Microphone
  - IR Illuminators
  - Standard or High Resolution
  - 2.5mm, 3.6mm or 8.0mm lens



- RR-CT**
- Color Interior/Exterior Camera
  - Vandal-Resistant
  - 4-8mm Varifocal Lens
  - Standard or High Resolution
  - Rugged Tear Drop Shape Housing



- RR-CVIR**
- Color Interior Camera
  - Vandal Resistant
  - Built-in Microphone
  - IR Illuminators



- RR-CD**
- Color Interior/Exterior Camera
  - Vandal-Resistant
  - 4-8mm Varifocal Lens
  - Standard or High Resolution
  - Rugged Dome Housing

- RR-HDP**
- Hard Disk Player / Adapter

- RR-GPS**
- GPS Antenna for iSM (Interactive Speed & Mapping) Interface

- RR-WT200, WR200**
- Wireless LAN High Powered Transmitter, Receiver

- RR-ENV, RR-ENVH**
- Environmental Protective Enclosure, with Heater

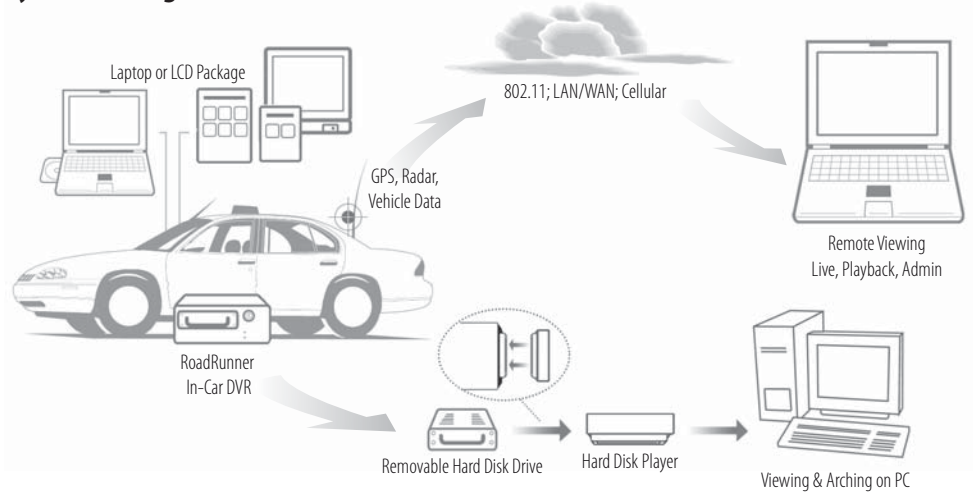
- RR-MR160HD, 250HD, 500HD, 750HD**
- Extra Removable Hard Disk Drive (160Gb, 250Gb, 500Gb, 750Gb)

#### Recording Duration Chart:

System-Wide Recording Rate	HDD Size: (160Gb is Standard and Included)			
	750Gb HDD	500Gb HDD	250Gb HDD	160Gb HDD
30 images per second:	<b>2,257 hours</b>	<b>1,503 hours</b>	<b>750 hours</b>	<b>474 hours</b>
60 images per second:	<b>1,128 hours</b>	<b>751 hours</b>	<b>375 hours</b>	<b>236 hours</b>
90 images per second:	<b>752 hours</b>	<b>501 hours</b>	<b>250 hours</b>	<b>158 hours</b>
120 images per second:	<b>564 hours</b>	<b>375 hours</b>	<b>187 hours</b>	<b>118 hours</b>

Recording durations are based on standard quality. For complete recording duration estimates, please utilize the HDD Calculator tool: [www.avt-usa.com](http://www.avt-usa.com)

#### System Configuration:



For additional system options and specifications visit our website: [www.avt-usa.com](http://www.avt-usa.com)

Features and specifications are subject to change without notice



14148 NE 190th Street  
Woodinville, WA 98072

[www.avt-usa.com](http://www.avt-usa.com)

Tel: 888-AVT-USA-1 / 425-483-7100  
Fax: 425-483-7200

Video Clips, Manuals, Brochures...